



HF30-0003 FAKRA-M 6 P MCX

Contacting FAKRA-Male, short version

NEW

| | |
|---------------------------|---------------|
| Centers (mm/mil) | 6,50 / 256 |
| Current (Circular) | 10 A |
| Current (Internal) | 3 A |
| Impedance [Z] | 50 Ohm |
| Frequency | 6 GHz |
| Temperature | -20°C...+80°C |

Spring Force (cN ±20%)

| | Preload | Nominal |
|----------------|---------|---------|
| Internal Cont. | 50 | 140 |
| Circular Cont. | 100 | 400 |

Travel (mm)

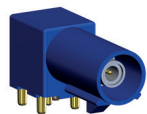
| | Nominal | Maximum |
|----------------|---------|---------|
| Internal Cont. | 2,0 | 2,5 |
| Circular Cont. | 3,0 | 3,0 |

Materials and Plating

| | |
|-----------------------|---------------------------|
| Internal Cont. | BeCu, gold plated |
| Circular Cont. | BeCu, gold plated |
| Barrel | Brass, gold plated |
| Spring Internal Cont. | Music Wire, gold plated |
| Spring Circular Cont. | Stainless steel, unplated |

Accessories

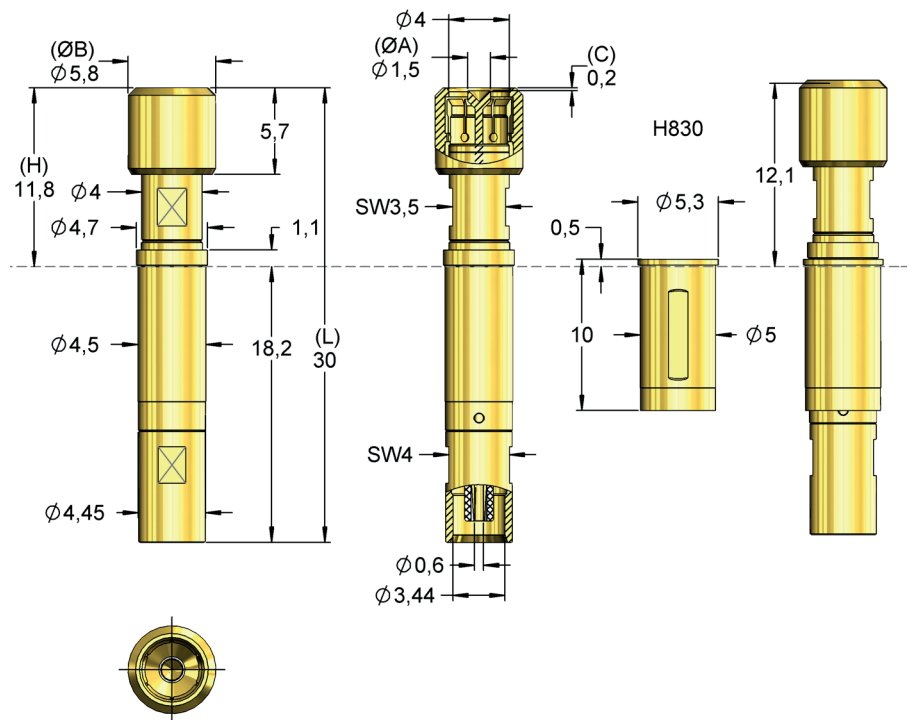
| | |
|--------------------------------|-------|
| Connection element up to 6 GHz | MXC-M |
|--------------------------------|-------|



FAKRA (Male)

HF83005B0003G540

HF830
+H830




For contacting FAKRA-Male connectors.
Different pre-assembled Connecting-Cables are available.

RADIO FREQUENCY PERFORMANCE

| recommended max. working frequency | 6 GHz | |
|---------------------------------------|-------------------|----------------------|
| | DC up to 4 GHz | 4 GHz up to 8 GHz |
| frequency range | | |
| typical insertion loss: max. | 0,4 dB | 0,6 dB |
| typical return loss: min. | 17 dB | 13 dB |
| typical VSWR: max. | 1,33 | 1,58 |

This table shows the reference values of the recommended frequency. The characteristics include the losses of the measuring adapters on the head side and cable side.

| Order Code | Sense Pin | Tip Style | Ø A | Ø B | C | H | L | Version |
|------------------|---|-----------|------|------|-------|-------|-------|---------|
| HF83005B0003G540 |  | 05 | 1,50 | 5,80 | -0,20 | 11,80 | 30,00 | - |