



HF30-0002 SMB-M 5 P MCX

Contacting SMB-Male, short version

NEW

Centers (mm/mil)	6,00 / 236
Current (Circular)	10 A
Current (Internal)	3 A
Impedance [Z]	50 Ohm
Frequency	5 GHz
Temperature	-20°C...+80°C

Spring Force (cN ±20%)

	Preload	Nominal
Internal Cont.	50	120
Circular Cont.	120	400

Travel (mm)

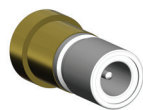
	Nominal	Maximum
Internal Cont.	2,0	3,0
Circular Cont.	2,0	3,0

Materials and Plating

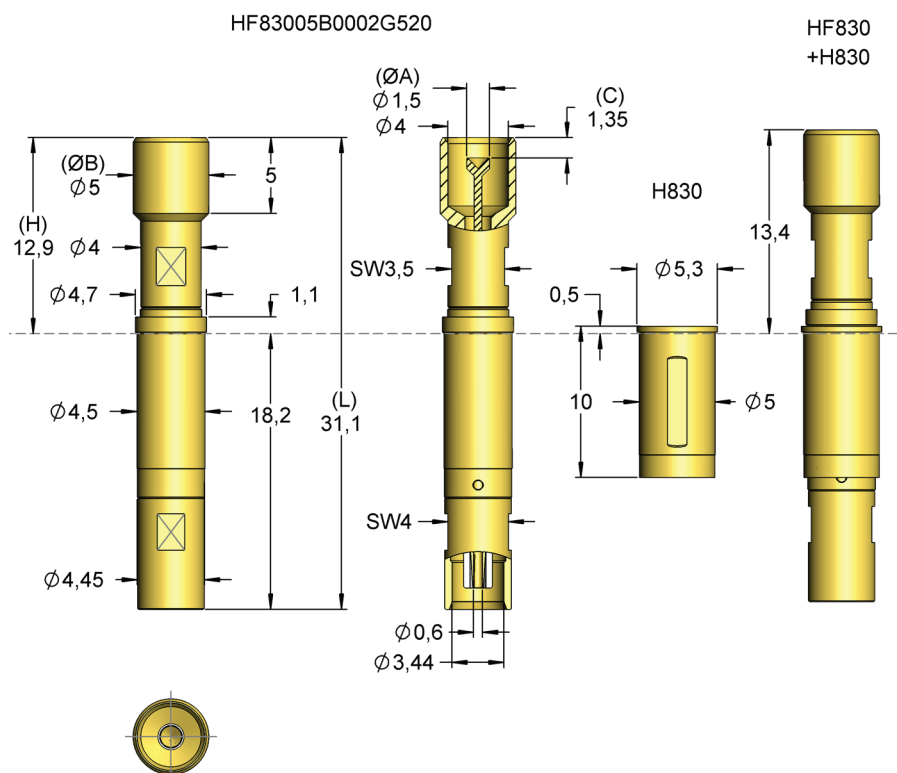
Internal Cont.	BeCu, gold plated
Circular Cont.	BeCu, gold plated
Barrel	Brass, gold plated
Spring Internal Cont.	Music Wire, gold plated
Spring Circular Cont.	Stainless steel, unplated

Accessories

Connection element up to 6 GHz	MXC-M
--------------------------------	-------



SMB (Male)



For contacting SMB-Male connectors.
Different pre-assembled Connecting-Cables are available.

RADIO FREQUENCY PERFORMANCE

recommended max. working frequency	6 GHz	
	DC up to 4 GHz	4 GHz up to 8 GHz
frequency range		
typical insertion loss: max.	0,4 dB	0,55 dB
typical return loss: min.	15 dB	11 dB
typical VSWR: max.	1,43	1,78

This table shows the reference values of the recommended frequency. The characteristics include the losses of the measuring adapters on the head side and cable side.

Order Code	Sense Pin	Tip Style	Ø A	Ø B	C	H	L	Version
HF83005B0002G520		05	1,50	5,00	-1,35	12,90	31,10	-