



HF30-0004 FAKRA-F 6 P MCX

Contacting FAKRA-Female, short version

NEW

Centers (mm/mil)	6,50 / 256
Current (Circular)	10 A
Current (Internal)	3 A
Impedance [Z]	50 Ohm
Frequency	6 GHz
Temperature	-20°C...+80°C

Spring Force (cN ±20%)

	Preload	Nominal
Internal Cont.	50	90
Circular Cont.	100	400

Travel (mm)

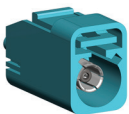
	Nominal	Maximum
Internal Cont.	1,0	2,9
Circular Cont.	2,0	3,0

Materials and Plating

Internal Cont.	BeCu, gold plated
Circular Cont.	BeCu, gold plated
Barrel	Brass, gold plated
Spring Internal Cont.	Music Wire, gold plated
Spring Circular Cont.	Stainless steel, unplated

Accessories

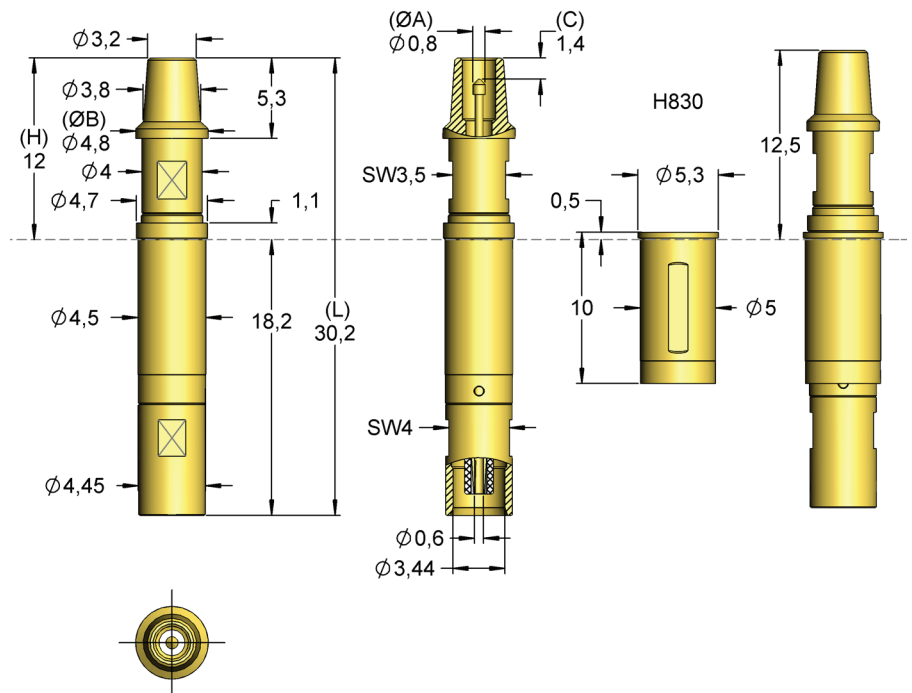
Connection element up to 6 GHz	MXC-M
--------------------------------	-------



FAKRA (Female)

HF83002B0004G490

HF830
+H830



For contacting FAKRA-Female connectors.
Different pre-assembled Connecting-Cables are available.

RADIO FREQUENCY PERFORMANCE

recommended max. working frequency	6 GHz	
frequency range	DC up to 4 GHz	4 GHz up to 8 GHz
typical insertion loss: max.	035 dB	0,5 dB
typical return loss: min.	16 dB	14 dB
typical VSWR: max.	1,38	1,50

This table shows the reference values of the recommended frequency. The characteristics include the losses of the measuring adapters on the head side and cable side.

Order Code	Sense Pin	Tip Style	Ø A	Ø B	C	H	L	Version
HF83002B0004G490		02	0,80	4,80	-1,40	12,00	30,20	-