



**HF77-0002 MateAX-M 12 S MSMP BG04-1**

**Contacting  
4-pole MateAX-Male**

**NEW**

<b>Centers (mm/mil)</b>	4,00 / 157
<b>Current (Circular)</b>	0,5 A
<b>Current (Internal)</b>	0,1 A
<b>Impedance [Z]</b>	50 Ohm
<b>Frequency</b>	12 GHz
<b>Temperature</b>	-20°C...+80°C

**Spring Force (cN ±20%)**

	Preload	Nominal
Internal Cont.	95	120
Circular Cont.	230	420

**Travel (mm)**

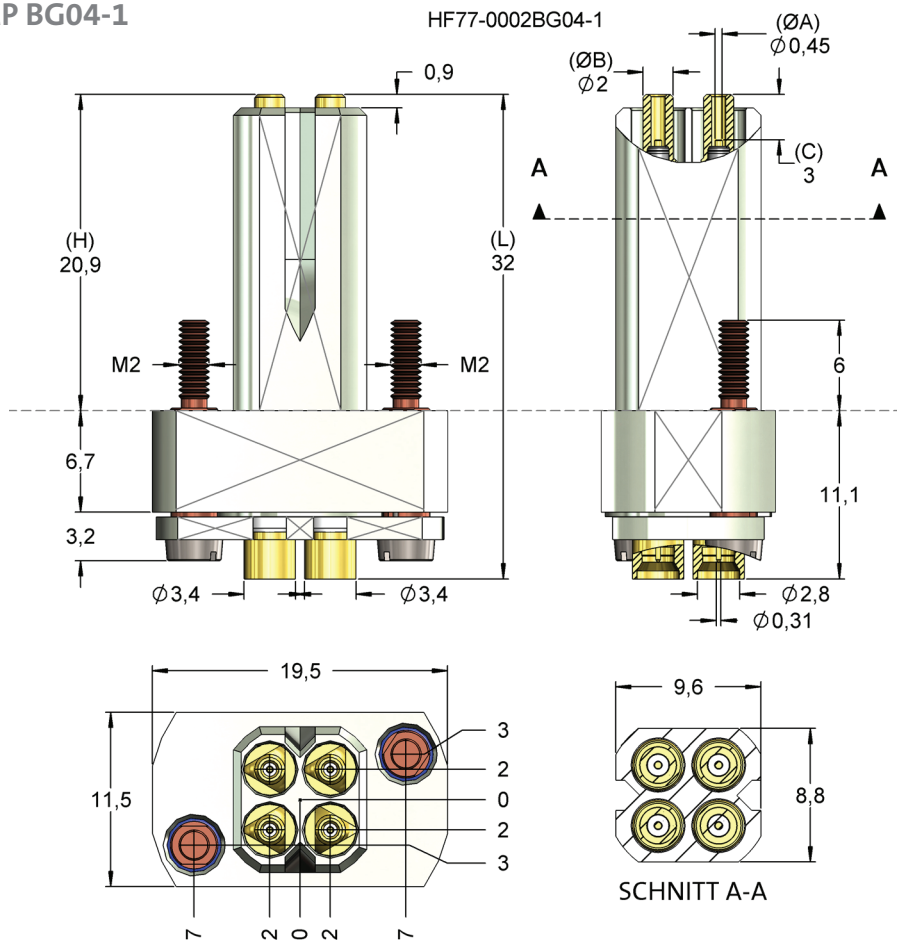
	Nominal	Maximum
Internal Cont.	0,5	1,8
Circular Cont.	2,0	2,8
Wrench Size		-

**Materials and Plating**

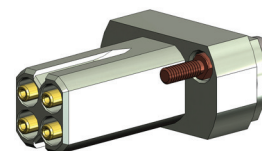
Internal Cont.	BeCu, gold plated
Circular Cont.	BeCu, gold plated
Barrel	Brass, gold plated
Spring Internal Cont.	Music Wire, gold plated
Spring Circular Cont.	Stainless steel, unplated

**Accessories**

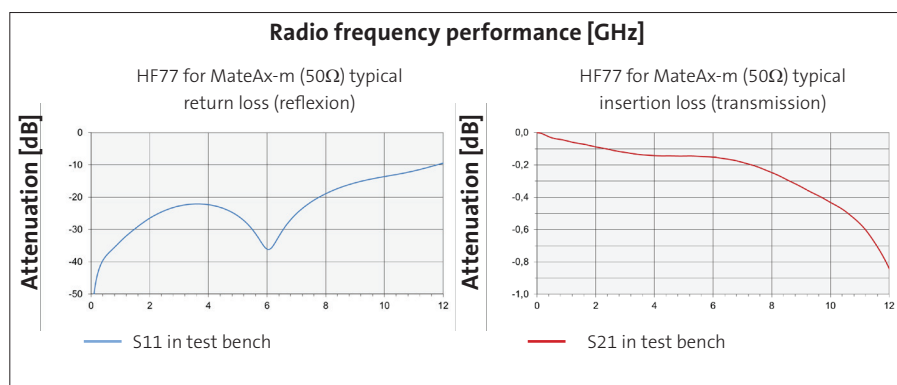
Change probe	HF7716B0002G530
Assembly tool	FZWZ-005
Connection element 500mm up to 12 GHz	H77AE3



The probe can be mounted using the flange.  
Cable connection with standard connector Mini SMP female.



MateAX-Male (4-pole)



Order Code	Sense Pin	Tip Style	Ø A	Ø B	C	H	L	Version
1035528		16	0,45	2,00	-3,00	20,90	32,00	-