



**HF77-0001 HFM-M S MSMP BG04-1**

**Contacting  
4-pole HFM-Male**

**NEW**

<b>Centers (mm/mil)</b>	4,00 / 157
<b>Current (Circular)</b>	0,5 A
<b>Current (Internal)</b>	0,1 A
<b>Impedance [Z]</b>	50 Ohm
<b>Frequency</b>	12 GHz
<b>Temperature</b>	-20°C...+80°C

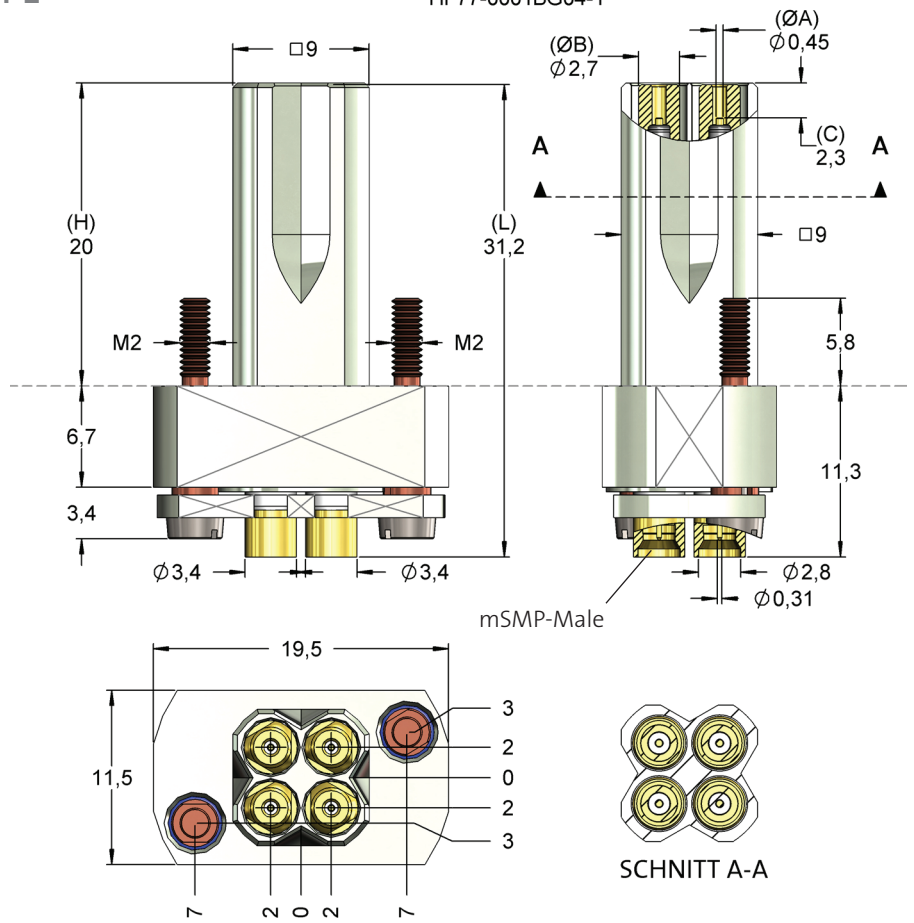
Spring Force (cN ±20%)		
	Preload	Nominal
Internal Cont.	95	120
Circular Cont.	230	420

Travel (mm)		
	Nominal	Maximum
Internal Cont.	0,5	1,8
Circular Cont.	2,0	2,8
Wrench Size	-	

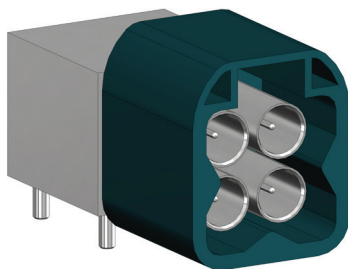
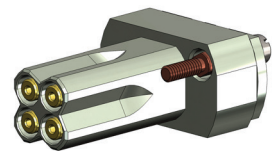
Materials and Plating	
Internal Cont.	BeCu, gold plated
Circular Cont.	BeCu, gold plated
Barrel	Brass, gold plated
Spring Internal Cont.	Music Wire, gold plated
Spring Circular Cont.	Stainless steel, unplated

Accessories	
Change probe	HF7716B0001G530
Assembly tool	FUWZ-001
Connection element 500mm up to 12 GHz	H77AE3

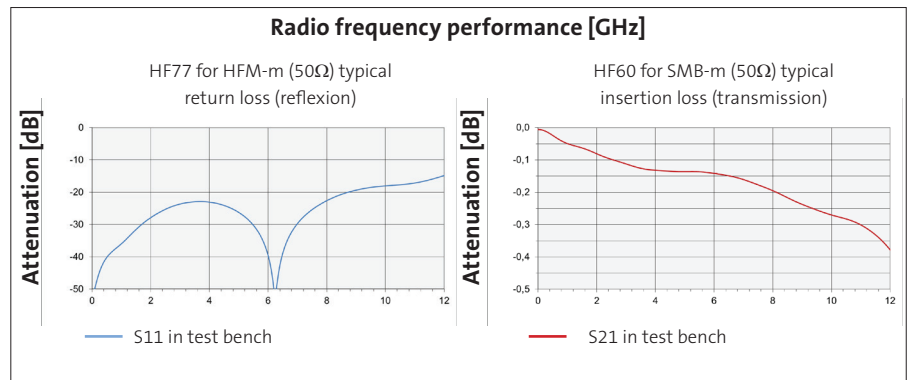
HF77-0001BG04-1



The probe can be mounted using the flange.  
Cable connection with standard connector Mini SMP female.



HFM-Male (4-pole)



Order Code	Sense Pin	Tip Style	Ø A	Ø B	C	H	L	Version
1034901		16	0,45	2,70	-2,30	20,00	31,20	-