

ABOUT MODI GmbH

MODI GmbH is the market leader in the production of incoming goods systems, which are used for the recording, the registration, the accounting and the matching of electronic modules on component rolls, drypacks, cardboard or trays.

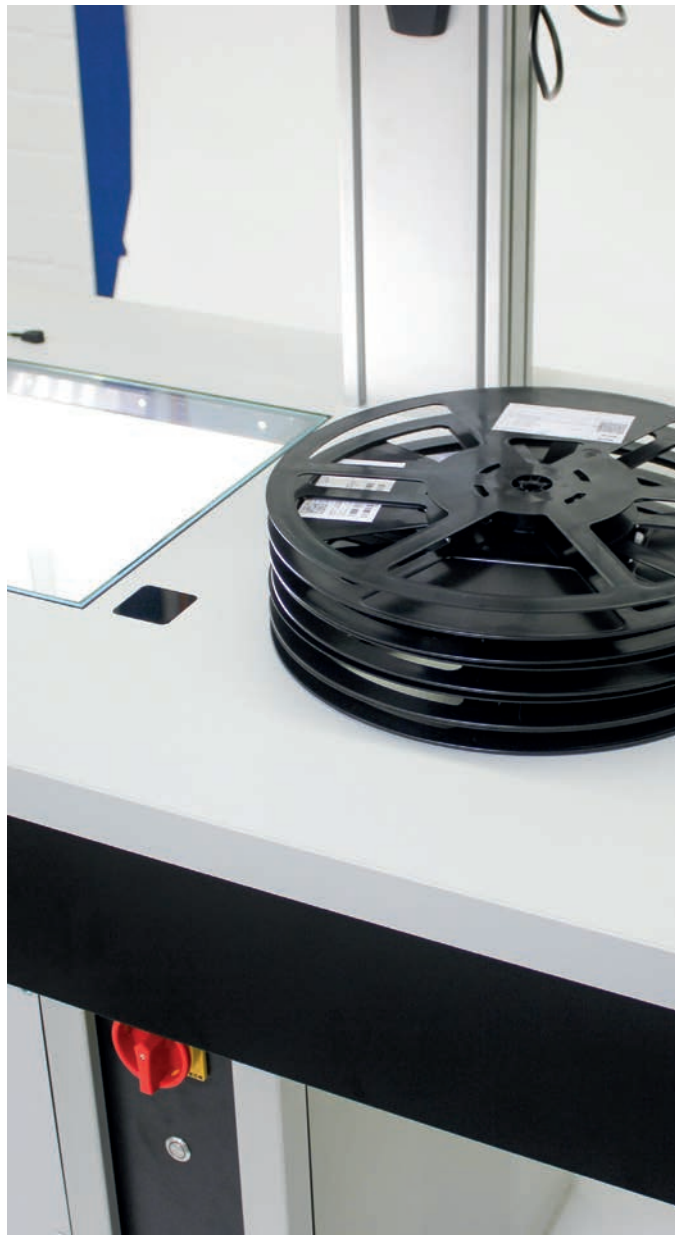
The system guarantees complete traceability. So it is always recognizable which product, batch, lot number or date codes of components when and where has been installed. Defective components can be localized and taken out of circulation quickly and precisely.

The patented ADOMO® technology, a camera combination with deflecting mirrors, is used for fast and detailed detection of barcodes, labels or plain text.

MODI products are MADE IN GERMANY and they stands for german engineering, reliability and longevity.

DESIGN YOUR INCOMING GOODS
TRANSPARENTLY AND WITHOUT ERRORS.

WITH THE INCOMING GOODS SCANNER
FROM MODI, YOU ALWAYS HAVE ALL THE
PRODUCTION COMPONENTS IN VIEW.



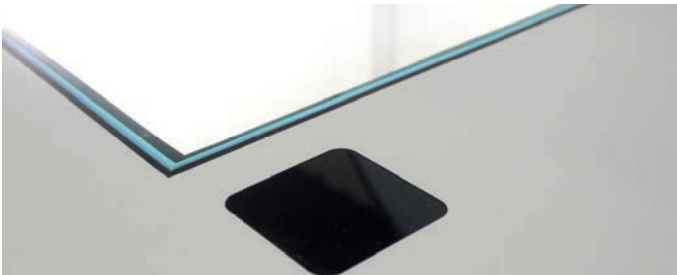
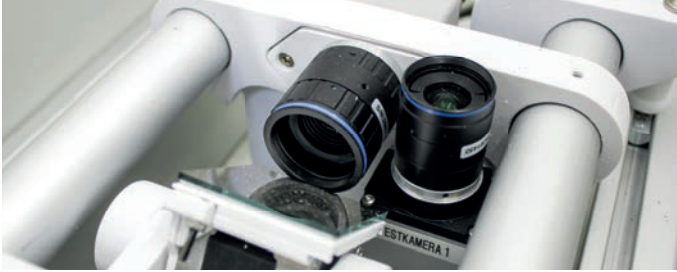
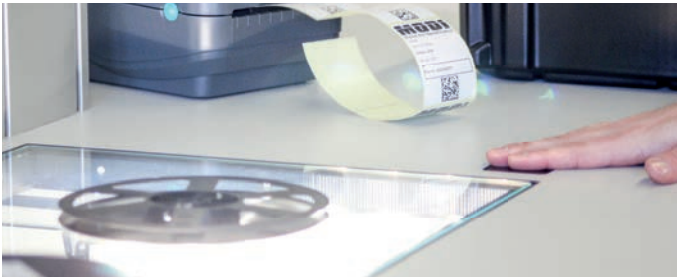
MODI
VISION FOR IDENTIFICATION

An der Hoehe 20
D-51674 Wiehl
phone: +49 2261 // 91 552 - 0
fax: +49 2261 // 91 552 - 39
info@moditrace.net
www.moditrace.net



WES V4
INCOMING GOODS SCANNER

www.moditrace.net



TRANSPARENT INCOMING GOODS PROCESS

Wherever visual controls and manual inputs by an operator are required for inbound registration, the risk of errors increases.

The in the table integrated and patented ADOMO® technology is used in industry for complete and detailed recognition of codes and labels. The entire hardware performance is efficiently directed only to the area to be scanned. This leads to shortest cycle times and highest reading accuracy.

Technology: 5 Megapixel overview camera
5 Megapixel detail camera
ADOMO® Mirror deflection technology

Code types: Int. 2/5, Code 39, Code 128, UPC/EAN, 4-State, Postnet, Planet, RSS, Code 93, Codebar, PDF 417, Symbology, Data Matrix, QR Code.

Products: Component rolls, drypacks, cardboards, trays

Interfaces: LAN/USB for label printer, common ERP/MES interfaces (Web Service, RFC, IDOC, API, etc.)

Interface to Partnes with Web Service or simple file exchange (XML, CSV, etc.)

TCP/IP Network Interface for simple file transfer

Add Ons:

- OCR
- Date Code Conversion
- Rejected Batches Module
- etc.

RELABELINGSTATION WITH ERP CONNECTION

The process starts with the collection of the delivery note information. There are two options to acquire the needed information. Depending on the ERP software it is also possible to work with ASN (advanced shipping notification) data. Together this information comprises the expected total of material. By placing the delivery note onto the reading area the system reads out all information and compares it to the ASN.



Now the operator starts the relabeling procedure. By placing the reel or cardboard packaging onto the reading area the system reads out the manufacturer label and checks it with a master database in less than one second. If all information correspond with each other and if the item is not blocked within the system the printing process starts.

Now the printed label is placed onto the actual part. In a second scanning procedure the system checks if the right label is placed onto the right material. Now the procedure is finished for the operator.



Once the system achieves the expected amount out of ASN and shipping note the booking is triggered. While all traceability mechanisms run in the background a wide range of information is saved in a special traceability database. All collected data, image documents, booking and release information are distinctly assigned to a printed customer label.

In addition to the common ERP connection, the MODI system is also able to communicate with various MES, warehouse management and assembly systems, so that an optimal and tailor-made integration can be guaranteed in the processes.