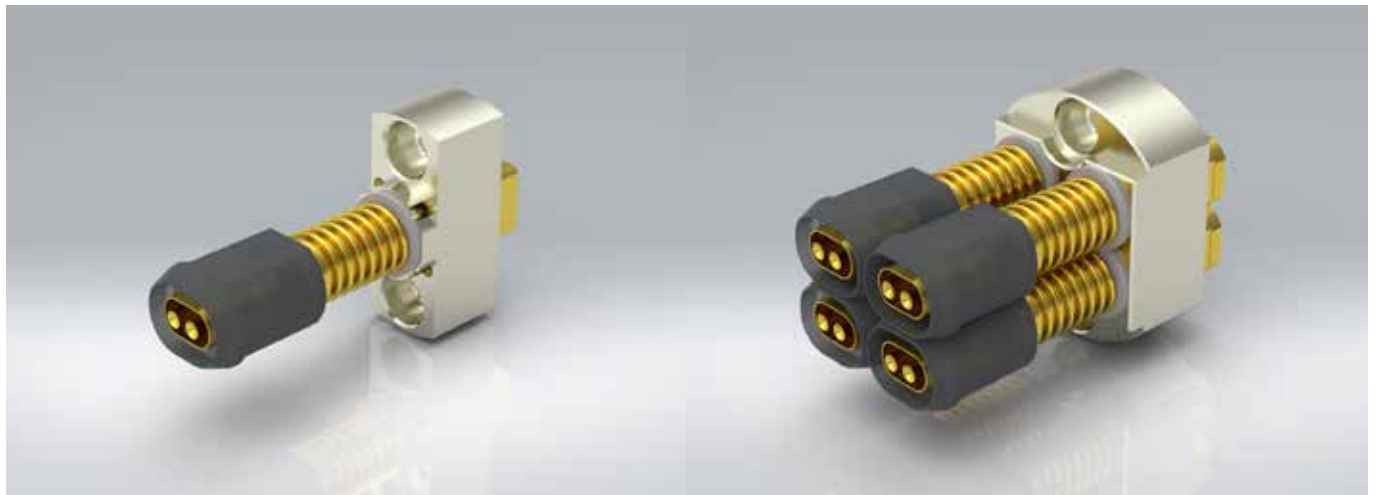


# RADIO FREQUENCY PROBES



## Contacting H-MTD<sup>®</sup>-Male

**NEW**

**Connector**                      **Probe**                      **Frequency**   **Mounting**   **Connection**   **Order number**                      **Data sheet**

H-MTD<sup>®</sup>  
Male



14 GHz

with flange

HMTD<sup>®</sup>-F

HF77-0003BG01-1



<b>Centers (mm/mil)</b>	-
<b>Impedance [Z]</b>	100 Ohm
<b>Frequency</b>	14 GHz
<b>Temperature</b>	-20°C...+80°C

Contacting of oval H-MTD<sup>®</sup> connector. Cable connection with standard H-MTD<sup>®</sup> -female connector. For the 2-fold and 4-fold connectors a modular design is possible at any time. The RF-Contact Probes can be mounted on top of each other or side by side using a flange.

Female

Male

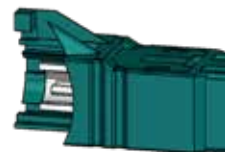
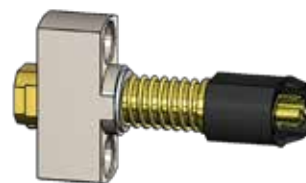


1-fold

H77AE1

HF77-0003BG01-1

HMTD<sup>®</sup>-Male



Female

Male



2-fold

Female

Male



4-fold