



## 2112152

**NEW**

### TC-P 201 006 RJ 11 Test Connector for RJ-11

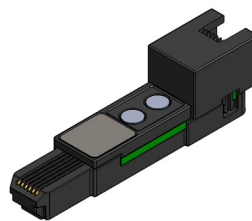
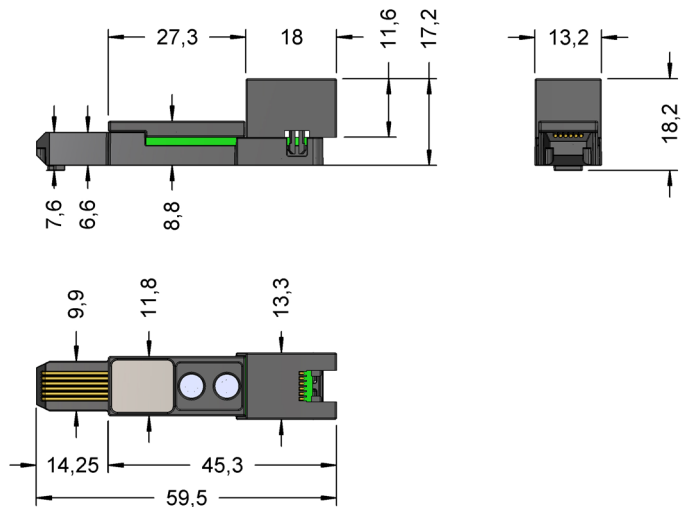
<b>Max. Data rate</b>	1 Gbit/s
<b>Voltage</b>	25 VAC / 60 VDC
<b>Current</b>	1,5 A at 25°C
<b>R typ</b>	<20 mOhm
<b>Temperature</b>	-20°C...+75°C

Test connector (6 pole) for contacting RJ-11 interfaces.  
Applications in data networks, data transmission, power supplies, microphones etc.

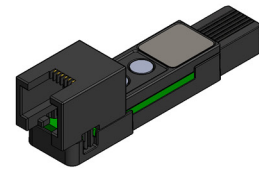
Features:

- Smooth contact to test item (front view)
- Easy connection to test system with RJ-11 cable (rear view)
- Up to 200.000 contact cycles

Series	Pole count	Type
e.g. TC-P 201 006 RJ 11		
Holding device	Contact side	Version



Front view



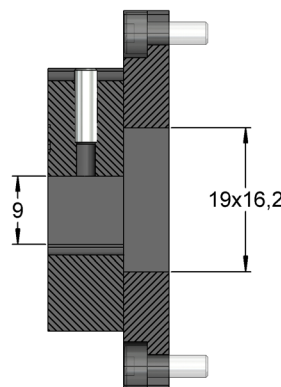
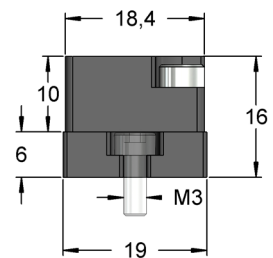
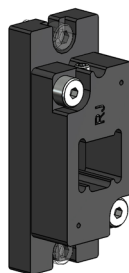
Rear view

## 2112201

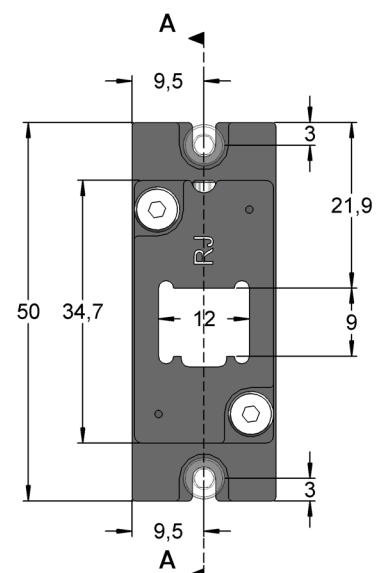
### TC-H 201 Holding Device for Test Connector RJ-xx

Due to the centered seat of the test connector the holding device allows a parallel movement of the test connector and its connection.

- Floating-mounting of test connectors of  $\pm 0,4$  mm in x- and y-direction
- A torsion angle of up to  $1.8^\circ \pm 0.2^\circ$  is possible
- The holding device has a life cycle of more than 500.000 mechanical movements
- The holding device is fixed only by two screws at the upper and lower ends
- The test connector is attached to the holding device using only one locking screw



A-A



The threaded pin requires a hex wrench SW1,5.