

2112150

NEW

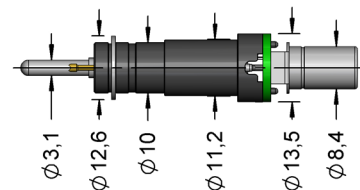
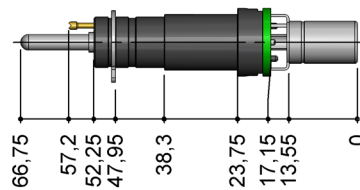
TC-P 200 002 RCA Test Connector for RCA

Data rate	500 khz
Voltage	25 VAC / 60 VDC
Current	1,5 A at 25°C
R typ	<50 mOhm
Temperature	-20°C...+75°C

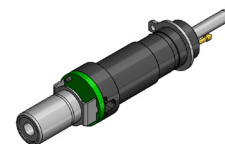
Test solution for RCA connectors.
Applications with standard Cinch-
connectors for audio coaxial cables

Features:

- Smooth contact to test item
(front view)
- Easy connection to Cinch-cable
(rear view)
- Up to 200.000 contact cycles



Front view



Rear view

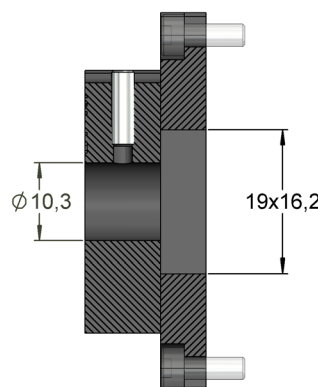
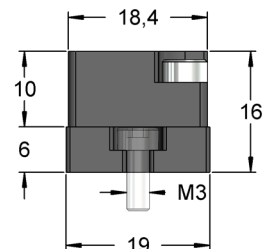
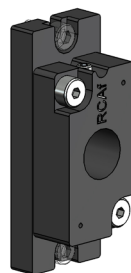
Series	Pole count	Type
e.g. TC-P 200	002	RCA
Holding device	Contact side	Version

2112200

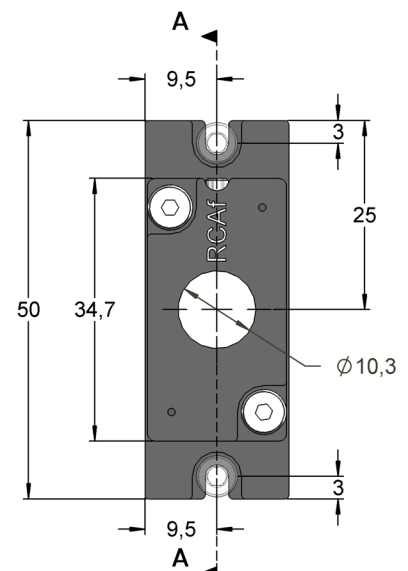
TC-H 200 Holding Device for Test Connector RCA

Due to the centered seat of the test
connector the holding device allows a
parallel movement of the test connector
and its connection.

- Floating-mounting of test
connectors of $\pm 0,4$ mm in
x- and y-direction
- A torsion angle of up to $1.8^\circ \pm 0.2^\circ$
is possible
- The holding device has a life cycle
of more than 500.000 mechanical
movements
- The holding device is fixed only
by two screws at the upper and
lower ends
- The test connector is attached
to the holding device using only one
locking screw



A-A



The threaded pin requires a hex wrench
SW1,5.