



2112148

NEW

TC-P 197 019 HDMI 1.4 Test Connector for HDMI 1.4

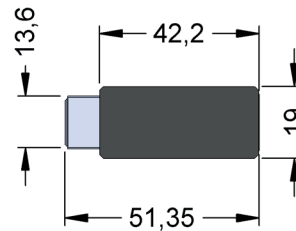
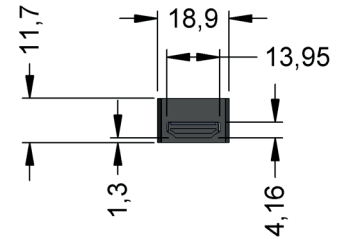
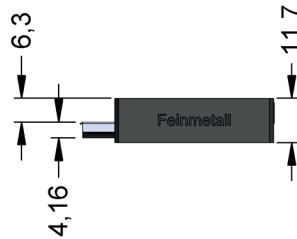
Max. Data rate	8,16 Gbit/s
Voltage	25 VAC / 60 VDC
Current	0,5 A at 25°C
R typ	<20 mOhm
Temperature	-20°C...+75°C

Test solution for HDMI connectors
(19 pole).
Applications in video and audio systems.

Features:

- Smooth contact to test item
(front view)
- Easy connection to HDMI cable
(rear view)
- Up to 50.000 contact cycles

Series	Pole count	Type
e.g. TC-P 197	019	HDMI 1.4
Holding device	Contact side	Version



Front view



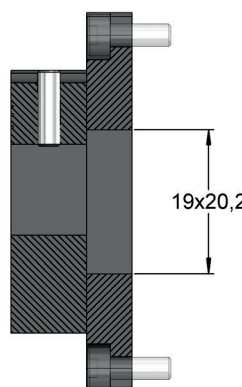
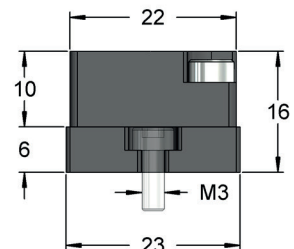
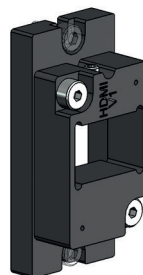
Rear view

2112197

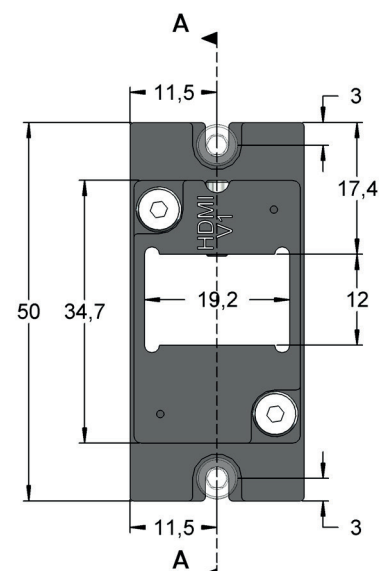
TC-H 197 Holding Device for Test Connector HDMI

Due to the centered seat of the test connector the holding device allows a parallel movement of the test connector and its connection.

- Floating-mounting of test connectors of $\pm 0,4$ mm in x- and y-direction
- A torsion angle of up to $1.8^\circ \pm 0.2^\circ$ is possible
- The holding device has a life cycle of more than 500.000 mechanical movements
- The holding device is fixed only by two screws at the upper and lower ends
- The test connector is attached to the holding device using only one locking screw



A-A



The threaded pin requires a hex wrench SW1,5.