



1860C001

**High Current Test Head
up to 50 A for
Contacting Uneven Surfaces**

Centers (mm/mil)	12,0 / 472
Current	50,0 A
R typ	<4 mOhm
Temperature	-45°C...+200°C (H)

Spring Force (cN ±20%)

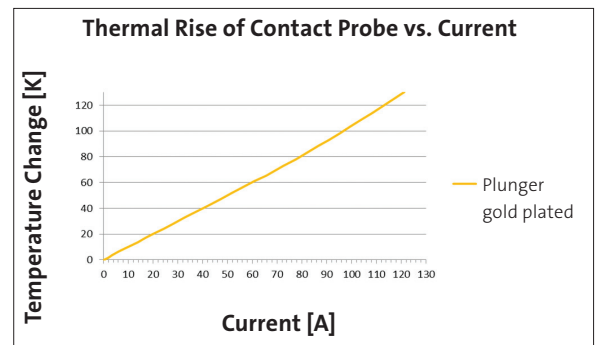
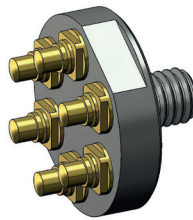
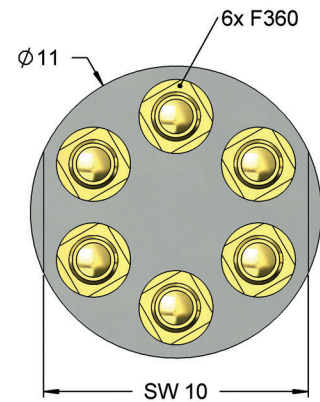
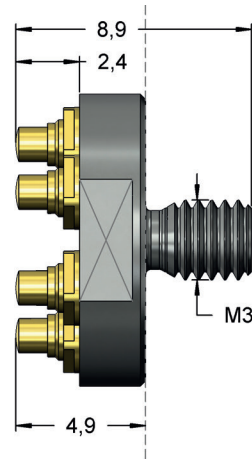
Version	Preload	Nominal
C	300	480

Travel (mm)

Version	Nominal	Maximum
C	1,0	1,2
Thread (M)	3,0	
Wrench Size	10,0	

Materials and Plating

Plunger	BeCu, gold plated
Barrel	Copper, gold plated
Spring	Stainless steel, unplated



1860C006

**High Current Test Head
up to 50 A for
Contacting Uneven Surfaces**

Centers (mm/mil)	12,0 / 472
Current	100,0 A
R typ	<2 mOhm
Temperature	-45°C...+200°C (H)

Spring Force (cN ±20%)

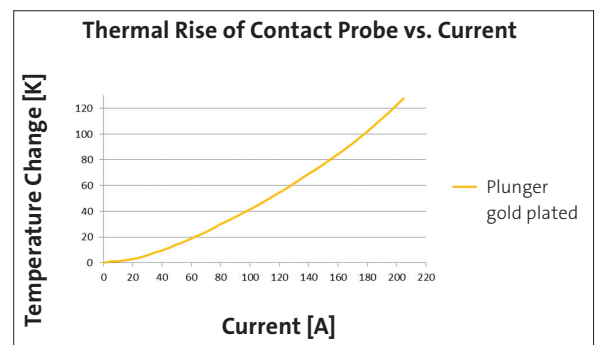
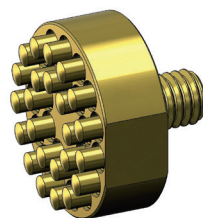
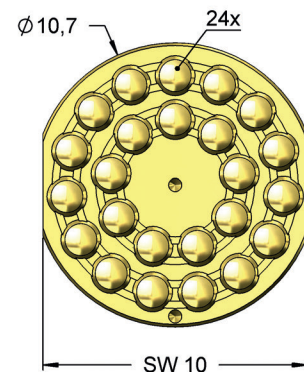
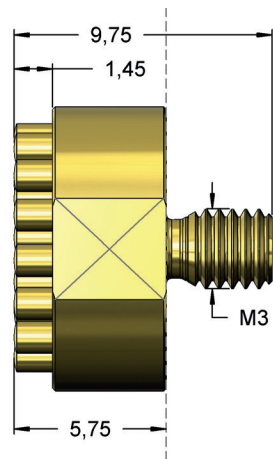
Version	Preload	Nominal
C	960	1920

Travel (mm)

Version	Nominal	Maximum
C	0,9	1,2
Thread (M)	3,0	
Wrench Size	10,0	

Materials and Plating

Plunger	Brass, gold plated
Barrel	Copper, gold plated
Spring	Stainless steel, unplated



These contact blocks are screwed directly into conductive material. It is essential that not only the thread, but also the whole surface of the block has an electrical contact. The electrical connection can be realized also directly with the conductive material. The maximum current depends on the allowed temperature rise.