



1860C005

**High Current Probe up to 50 A
Robust Version,
Threaded**

Centers (mm/mil)	11,0 / 433
Current	50,0 A
R typ	<6 mOhm
Temperature	-45°C...+200°C (H)

Spring Force (cN ±20%)

Version	Preload	Nominal
C	200	530

Travel (mm)

Version	Nominal	Maximum
C	5,0	7,0
Thread (M)	8x1 / 3,0	
Wrench Size	9,0 / 5,5	
Pointing Accuracy	±0,08 mm	

Materials and Plating

Plunger	BeCu, gold plated
Barrel	Brass, unplated
Spring	Stainless steel, unplated

Accessories

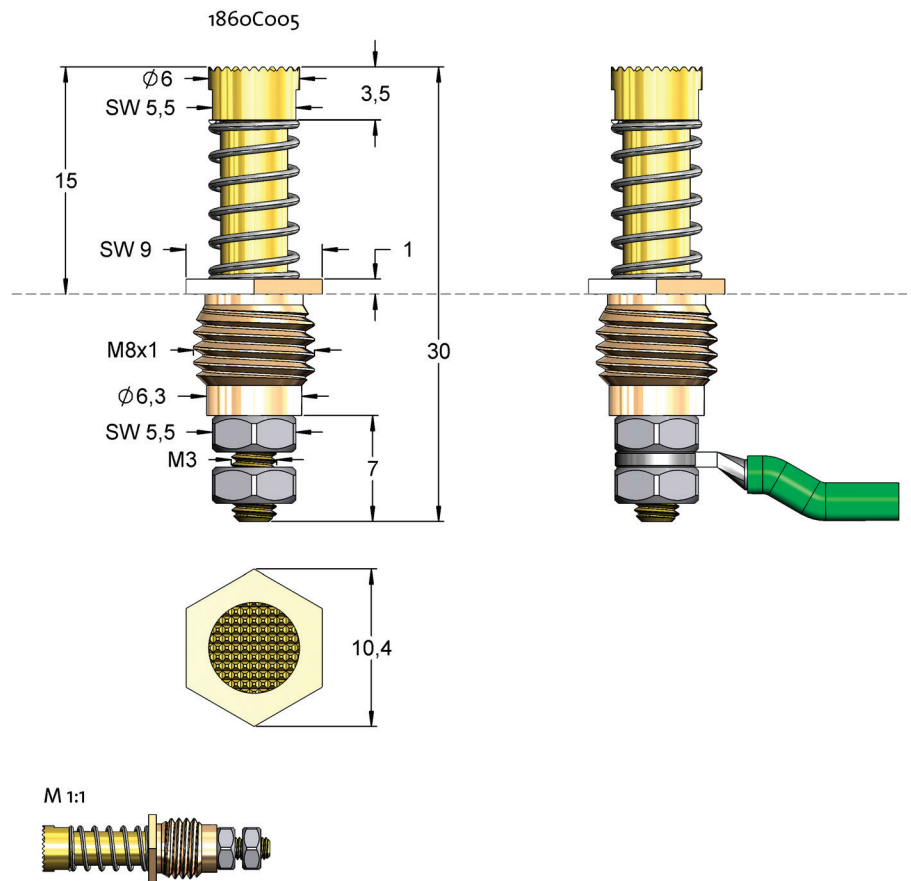
Insertion tool receptacle	FEWZ-348E0
Screw-in tool probe	FWZ348 (T)

Drill Size (mm)

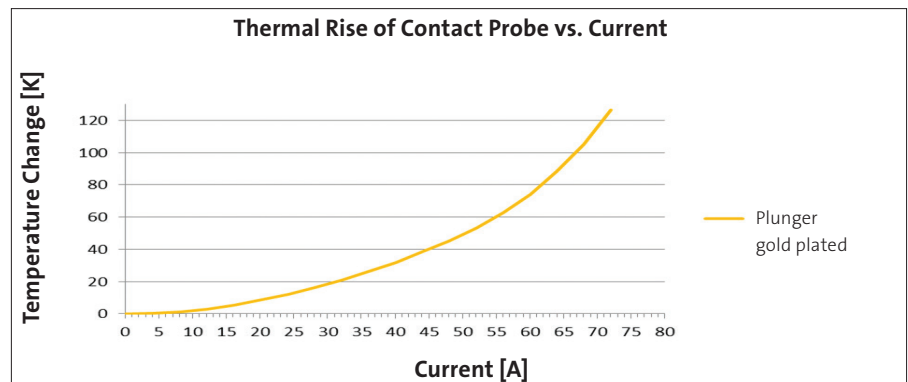
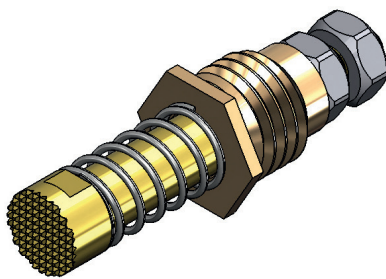
Barrel with knurl	10,95 - 10,99
-------------------	---------------

Projection Height (mm)

1860C005	15,0
----------	------



Robust high current probe with continuous plunger. The M3 thread can be mounted with a counter nut to a cable eye.



Order Code	Tip Style	Number	Material	ϕ in mm	Plating	Version	Screw-in Tool
1860C005		06	B	6,00	G	C	-